



# SWIFIX Fixings installation guidelines SWI/CC



These guidelines are for the refitting of items back through external wall insulation (EWI) or solid wall insulation (SWI) systems using Swifix fixings.

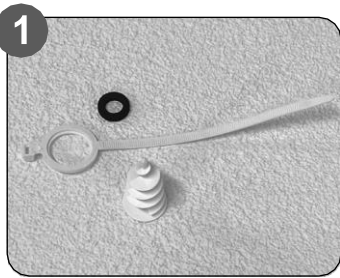
All Swifix fixings are easy to fix following our step by step instructions. All fixings are manufactured from high quality plastics, are robust and have been fully tested for strength, compression and load.

It is important that our installation guidelines are adhered to since the EWI/SWI system must not be compromised.

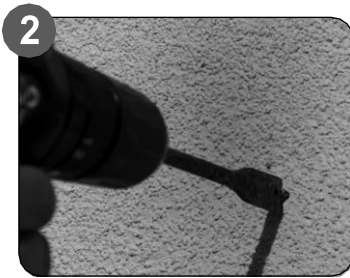
**If you require any assistance, please contact us on 01884 560477 or email [info@swifix.co.uk](mailto:info@swifix.co.uk)**

## Installation guidelines for fitting the Spiral Cable connector (SWI/CC)

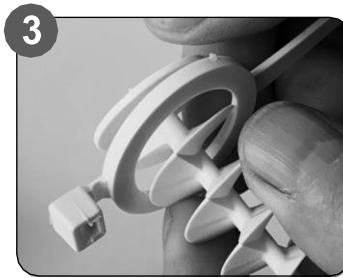
When installing into older (cured) installations of EWI then a larger pilot hole will be required (16mm) if a newly installed EWI system then a smaller pilot hole may be required (6mm).



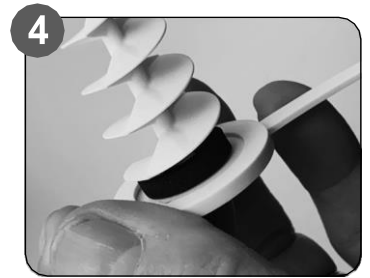
1 The solution is made up of three parts.



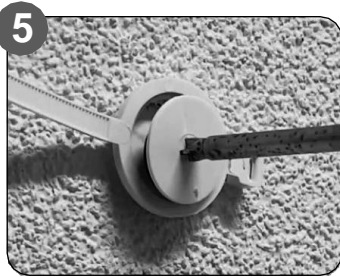
2 Mark position and drill pilot hole through the render at 300mm centres.



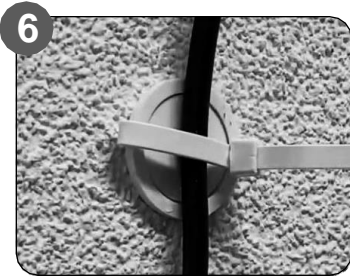
3 Connect the cable strap.



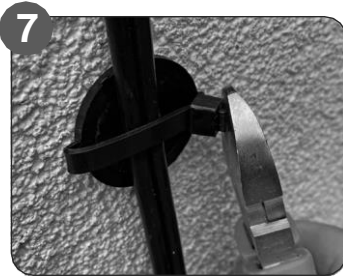
4 Place the neoprene washer onto the spiral.



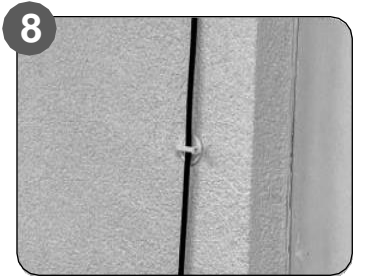
5 Insert the spiral into the pilot hole, and using a T30 Torx screwdriver, gently screw the spiral into the EWI system.



6 Place cable or pipe and connect the cable strap.



7 Remove any excess length of cable strap.



8 Installation Complete



**SWIFIX Ltd**

Email [info@swifix.co.uk](mailto:info@swifix.co.uk)

Web [www.swifix.co.uk](http://www.swifix.co.uk)

Tel 01884 560477

Scan QR code for installation videos



#FollowTheBear

