



SWIFIX Fixings installation guidelines SWI/BC



These guidelines are for the refitting of items back through external wall insulation (EWI) or solid wall insulation (SWI) systems using Swifix fixings.

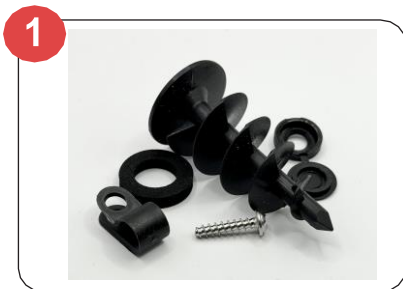
All Swifix fixings are easy to fix following our step by step instructions. All fixings are manufactured from high quality plastics, are robust and have been fully tested for strength, compression and load.

It is important that our installation guidelines are adhered to since the EWI/SWI system must not be compromised.

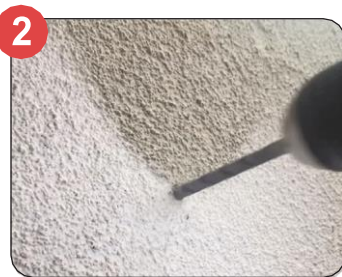
If you require any assistance, please contact us on 01884 560477 or email info@swifix.co.uk

Installation guidelines for fitting the Spiral connector (SWI/BC)

When installing into older (cured) installations of EWI then a larger pilot hole will be required (16mm) if a newly installed EWI system then a smaller pilot hole may be required (6mm). It is important that a 3.5mm thread diameter screw is used into the spiral.



1 The solution is made up of five parts.



2 Mark the position required and drill a 6 -16mm hole through the render (cured render may need a larger pilot hole).



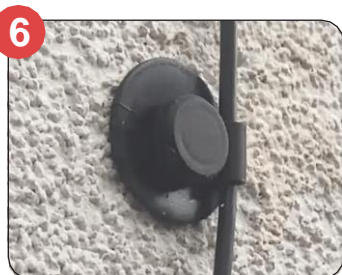
3 Place neoprene onto spiral.



4 Carefully Screw into render using a T30 torx head screw driver.
Note: Using mechanical means may burr the fitting.



5 Insert screw utilising the screw cap fix item required (shown - p-clip attaching cable).



6 Job complete and water tight.



SWIFIX Ltd

Email info@swifix.co.uk
Web www.swifix.co.uk
Tel 01884 560477

Scan QR code for installation videos



#FollowTheBear

