



SWIFIX Fixings installation guidelines SWI/WL



These guidelines are for the refitting of items back through external wall insulation (EWI) or solid wall insulation (SWI) systems using Swifix fixings.

All Swifix fixings are easy to fix following our step by step instructions. All fixings are manufactured from high quality plastics, are robust and have been fully tested for strength, compression and load.

It is important that our installation guidelines are adhered to since the EWI/SWI system must not be compromised.

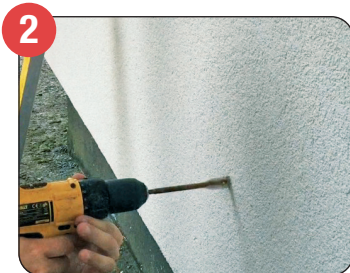
If you require any assistance, please contact us on 01884 560477 or email info@swifix.co.uk

Installation guidelines for SWI/WL

The same method is used to fit any item to the substrate using Swifix



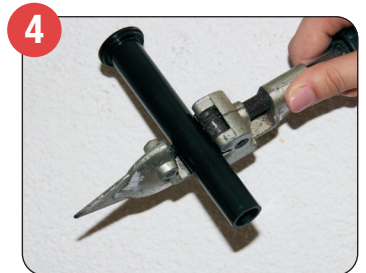
1 Mark the render to identify position of item to be secured.



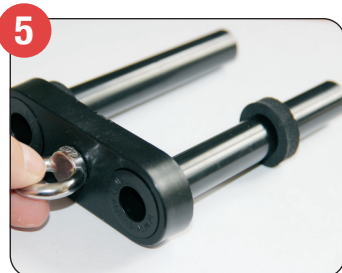
2 Drill a 16-18mm hole through the render and insulation until the original substrate is reached.



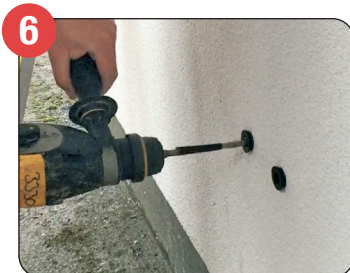
3 Insert tube, or measure depth of hole from finished render back to the original substrate. Allow for the depth of the WL bracket and an allowance of 4mm for the neoprene washer to compress and provide a seal when installed.



4 Cut tube to length using pipe cutter ensuring an allowance has been made for the depth.



5 Place neoprene washers on to tubes, connect eyebolt and insert fitting into holes.



6 Drill through tube into substrate to the appropriate depth for fixing (site specific).



7 Insert plug, fixing and screw cap.



8 Secured and water tight.



SWIFIX Ltd

Email info@swifix.co.uk
Web www.swifix.co.uk
Tel 01884 560477

#FollowTheBear

