



SWIFIX Fixings installation guidelines SWI/EX



These guidelines are for the refitting of items back through external wall insulation (EWI) or solid wall insulation (SWI) systems using Swifix fixings.

All Swifix fixings are easy to fix following our step by step instructions. All fixings are manufactured from high quality plastics, are robust and have been fully tested for strength, compression and load.

It is important that our installation guidelines are adhered to since the EWI/SWI system must not be compromised.

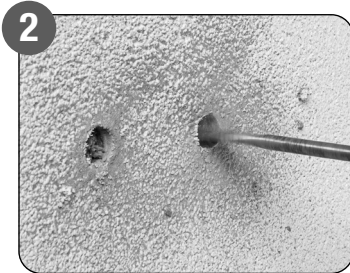
If you require any assistance, please contact us on 01884 560477 or email info@swifix.co.uk

Installation guidelines for fitting into depths over 120mm (SWI/EX)

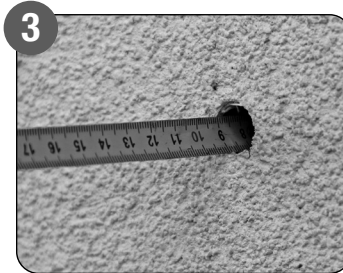
The same method is used to fit any item to the substrate using Swifix



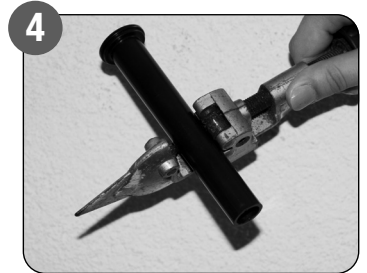
1 Mark the render to identify position of item to be secured.



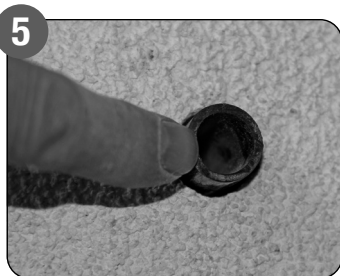
2 Drill a 16 -18mm hole through the render and insulation until the original substrate is reached.



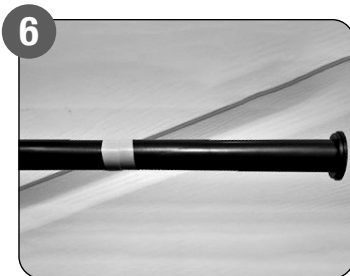
3 Insert tube, or measure depth of hole from finished render back to the original substrate, adding an allowance of 3-4mm to allow the neoprene washer to compress and provide a seal when installed.



4 Cut the SWI/EX to correct length required.



5 Tube is tapered so ensure this is inserted the correct way around to achieve alignment with the SWI-ST, place within system until substrate is reached.



6 If longer depth is required multiple EX tubes can be used, and secured together with insulation tape to improve insertion.



7 Attach neoprene washer and insert tube into system.



8 Continue with the SWI/ST installation process.



SWIFIX Ltd

Email info@swifix.co.uk
Web www.swifix.co.uk
Tel 01884 560477

#FollowTheBear

