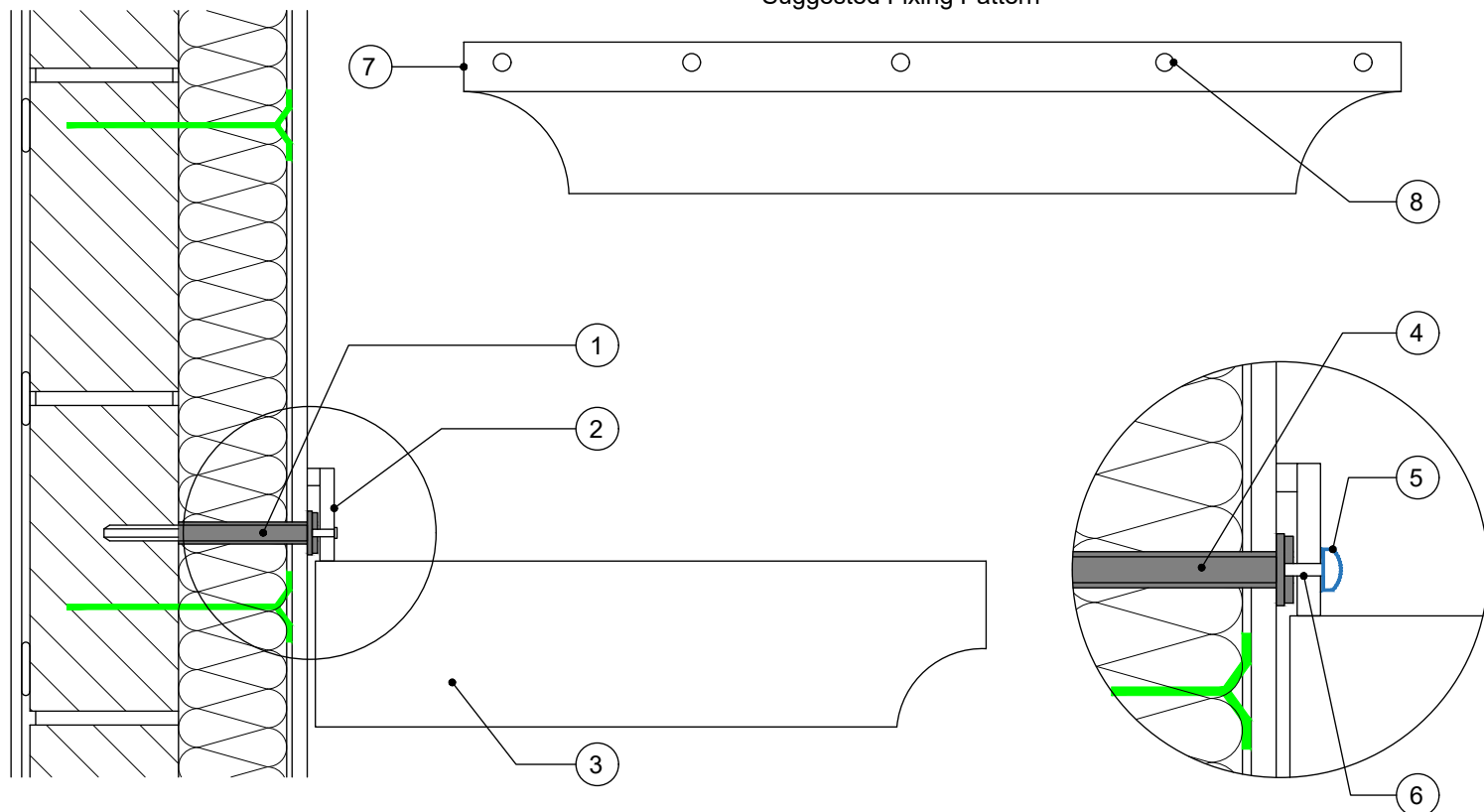


Suggested Fixing Pattern



1. SWI-ST Tube cut to length.
2. Fixing through upstand of canopy.
3. GRP Canopy.
4. SWI-ST.
5. Screw cap cover.
6. Fixing based on substrate to be secured to.
7. Upstand.
8. Pre drill upstand if required.

Fitting for lights, alarms, signs, hanging baskets, BT& utility boxes, hose reels, house numbers and canopies.

DRAWING TITLE: SW-ST-CANOPY



DRAWING No: EP - 012

DATE: 26-08-2022

SCALE: NTS

REFERENCES:

[www.swifix.co.uk](http://www.swifix.co.uk), [info@swifix.co.uk](mailto:info@swifix.co.uk)