



SWIFIX Fixings installation guidelines



These guidelines are for the refitting of items back through external wall insulation (EWI) or solid wall insulation (SWI) systems using Swifix fixings.

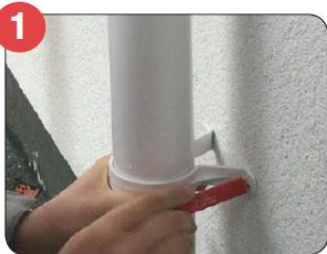
All Swifix fixings are easy to fix following our step by step instructions. All fixings are manufactured from high quality plastics, are robust and have been fully tested for strength, compression and load.

It is important that our installation guidelines are adhered to since the EWI/SWI system must not be compromised.

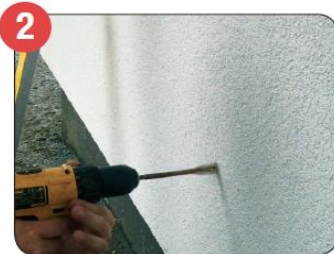
If you require any assistance, please contact us on **01884 560477** or email **info@swifix.co.uk**

Installation guidelines for all pipe clips

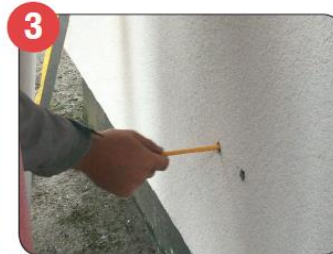
The same method is used to fit any item to the substrate using Swifix



1 Mark the render to identify position of item to be secured.



2 Drill a 16mm hole through the render and insulation until the original substrate is reached.



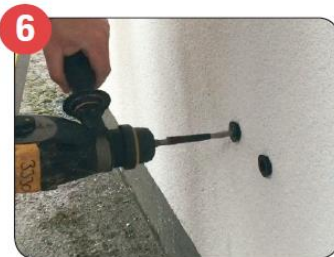
3 Insert tube, or measure depth of hole from finished render back to the original substrate, making an allowance of 4mm to allow the neoprene washer to compress and provide a seal when installed.



4 Cut tube to length using pipe cutter or hacksaw.



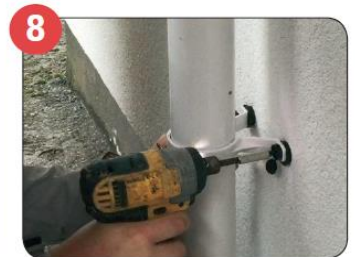
5 Place the neoprene washer onto tube and insert tube into wall.



6 Drill through tube into substrate to the appropriate depth for fixing (site specific).



7 Insert plug and attach fixing cap.



8 Insert the fixing and secure item in place.

Range of fixings



Connection point fitting



Single fitting



Extension tube



Satellite fitting plate



Tap fitting



SWIFIX Ltd

Email info@swifix.co.uk

Web www.swifix.co.uk

Tel 01884 560477

#FollowTheBear

