



# SWIFIX Fixings installation guidelines



These guidelines are for the refitting of items back through external wall insulation (EWI) or solid wall insulation (SWI) systems using Swifix fixings.

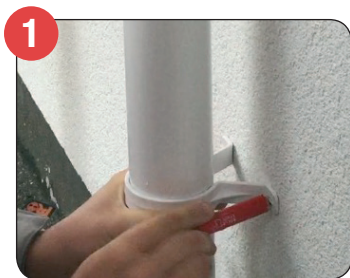
All Swifix fixings are easy to fix following our step by step instructions. All fixings are manufactured from high quality plastics, are robust and have been fully tested for strength, compression and load.

It is important that our installation guidelines are adhered to since the EWI/SWI system must not be compromised.

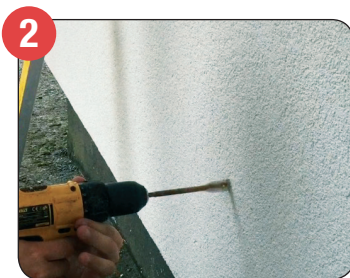
**If you require any assistance, please contact us on 01884 560477 or email [info@swifix.co.uk](mailto:info@swifix.co.uk)**

## Installation guidelines for all pipe clips

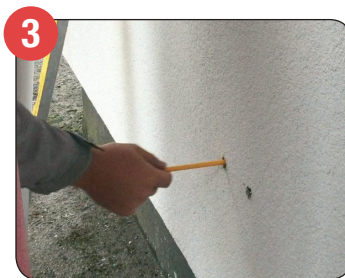
The same method is used to fit any item to the substrate using Swifix



1 Mark the render to identify position of item to be secured.



2 Drill a 16mm hole through the render and insulation until the original substrate is reached.



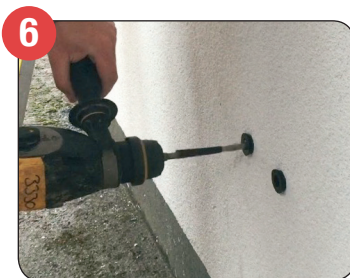
3 Insert tube, or measure depth of hole from finished render back to the original substrate, making an allowance for the 8mm neoprene washer.



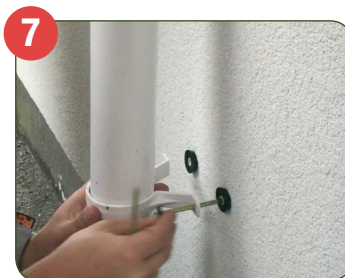
4 Cut tube to length using pipe cutter or hacksaw.



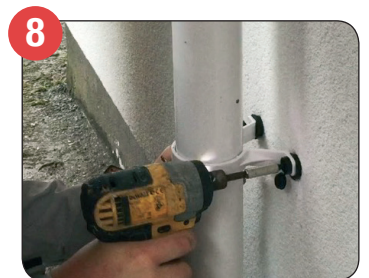
5 Place the neoprene washer onto tube and insert tube into wall.



6 Drill through tube into substrate to the appropriate depth for fixing (site specific).



7 Insert plug and attach fixing cap.

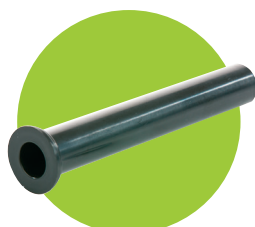


8 Insert the fixing and secure item in place.

## Range of fixings



Connection point fitting



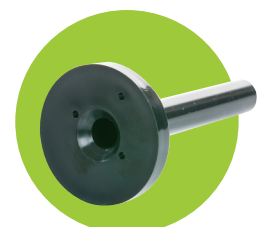
Single fitting



Extension tube



Satellite fitting plate



Tap fitting



# Fixing a satellite TV dish

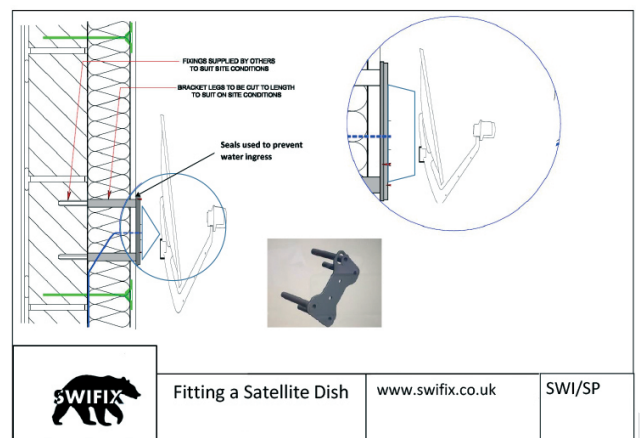
A simple, effective way of installing a terrestrial satellite dish through external wall Insulation.

The SWI-SP fixing has been designed to complement our range of products, which enables the re-fixing of external items through EWI/SWI systems without affecting guarantees and warranties.

The plate has been designed to allow retrofitting of a satellite bracket to be installed after the installation of the EWI/SWI system. The fixing comprises a base plate which is fixed back through the render and insulation and incorporates a neoprene washer to ensure a water tight seal.

The system is easy to install, saving time and money without compromising system guarantees and warranties.

The fixing system has already gained approval from the majority of EWI/SWI system suppliers and manufacturers in the UK and is a recommended solution by industry.



## SWIFIX Ltd

Email [info@swifix.co.uk](mailto:info@swifix.co.uk)  
Web [www.swifix.co.uk](http://www.swifix.co.uk)  
Tel 01884 560477

#FollowTheBear

