

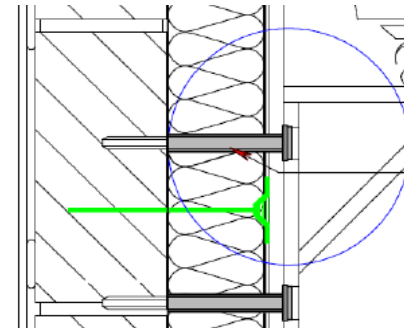


Technical Data Sheet



Applications

- ✓ Signs
- ✓ Canopies
- ✓ Lights
- ✓ Downpipes
- ✓ Alarms
- ✓ Fence post
- ✓ Gate post
- ✓ Utility boxes
- ✓ Hose reels
- ✓ Lightning Rods
- ✓ Gas pipes
- ✓ Pigeon netting
- ✓ RWG's
- ✓ Hose reels
- ✓ Hanging Baskets
- ✓ Security Grills

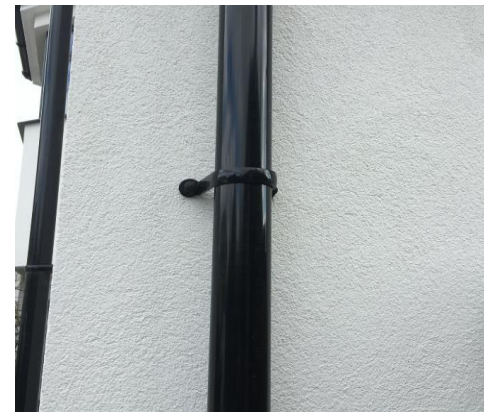


Advantages

- Swifix allows the ability to secure through External wall Insulation, avoiding the need for mastic, and without damaging the installed system.
- Items can be secured following the installation of EWI in any location to a building.
- Used with standard fixings, Swifix provides the most cost effective solution available.
- Fully tested and approved.
- Swifix can secure items in excess 100kgs.

Building Materials

- Swifix can be used through all systems, including EPS, Mineral or Dense insulation board.
- Swifix can be used with smooth, textured, dash, brick effect and brick slip finishes.
- Approved by major system manufacturers.



Functioning

- Increased thermal efficiencies.
- Fully recyclable
- Ideal for pre-positioned items.
- Ideal Maintenance solution.
- Durable.
- UK Designed and manufactured.

Loads

Stand off - Swifix

Type	[N]	Kg's
Compression tensile strength		
Brick Mortar Joint	5836	585

Stand off - Swifix

Type	[N]	Kg's
Recommened shear Loads		
*Brick Mortar Joint	1247	130

* M10 hammer fixing used for testing through 100mm overall system installed.

Swifix is approved and recommended by many leading system manufacturers, so check our website for further information.



SWIFIX Ltd

Email info@swifix.co.uk
 Web www.swifix.co.uk
 Tel 01884 560477

#FollowTheBear

